

EAN: 6414150108266

[static.oras.com/7262C](https://static.oras.com/7262C)



### NEW!

The new Oras Oramix is a bath and shower faucet that ensures a consistent and comfortable water temperature – even when there are variations in water pressure and temperature.

The advanced Oras Oramix provides fast response time to changes in the water supply and keeps the bath and shower temperature stable with a maximum variation of only  $\pm 1^\circ\text{C}$  (EN1111).

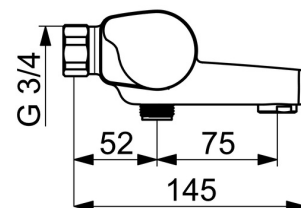
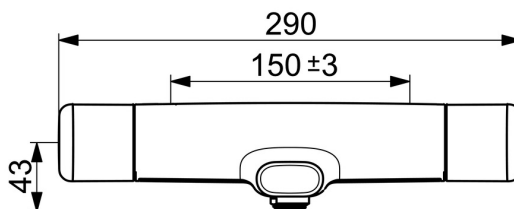
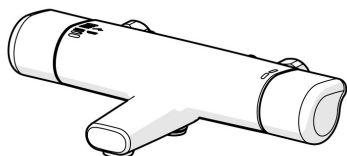
The new Oras Oramix offers an enhanced bath and shower experience and increased protection against scalding.

The temperature handle has a safety stop to prevent scalding, and the surface of the faucet does not get hot. All of this makes it a safe and comfortable choice for modern and sustainable installations.

The product is particularly well-suited for apartments, homes, and facilities like swimming pools and sports halls, where variations in pipe pressure and temperature are common.

Oras Oramix delivers a stable and pleasant shower temperature – every time.

- Bathtub & Shower
- Thermostatic
- Wall mounted
- Chrome
- Fixed spout
- Standard aerator
- Temperature control handle, Flow control handle, Eco feature for water flow
- Turn operated diverter, Integrated into flow control handle
- Safety stop against scalding at  $38^\circ\text{C}$ , The housing of the fittings conducts minimal heat
- Ceramic head part for flow control, Thermostatic comfort cartridge for precise temperature control, Non-return valve(s), Litter filter(s)
- Direct connection, Internal thread



## Technical data

### Flow properties

Eco-flow at 300 kPa	0.16 l/s
Flow-rate at 300 kPa	0.33 l/s
Pressure loss with flow (0.2 l/s)	230 kPa
Pressure loss with flow (0.3 l/s)	300 kPa

### Technical properties

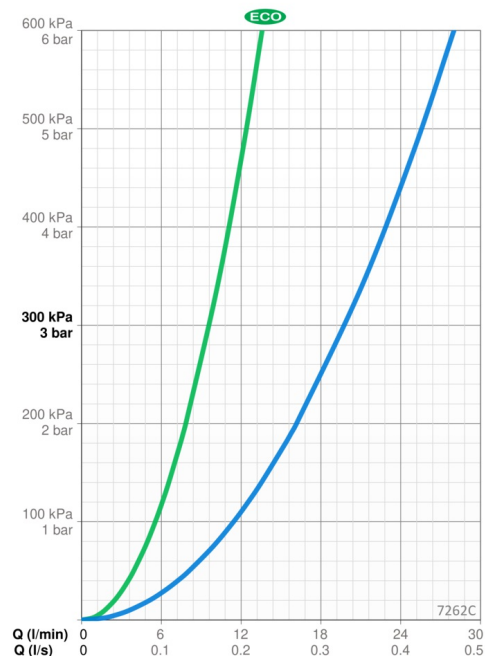
Hot water supply	max. +80°C
Working pressure	100 - 1000 kPa
Connection size	G3/4
Installation width	150 mm
Backflow prevention (EN1717)	EB
Material	Brass/Plastic

### Regulations

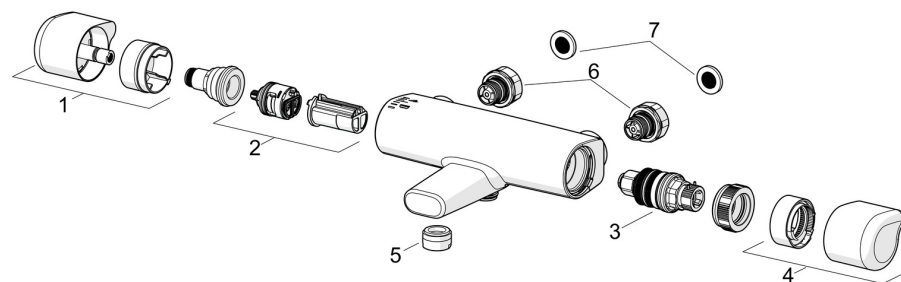
EN standard	EN 1111
Noise class	I (ISO 3822)

### Approvals and Declarations

Sintef	4015
Declaration of conformity	DoC



## Spare parts



### SP7262C

	Name	Code
01	Flow control handle	1006584V
02	Diverter and cartridge	601278V
03	Thermostatic cartridge	1008762V
04	Temperature control handle	1005875V
05	Water star, M24x1	158556
06	Combiner	602438/2
07	Filter sealing, G3/4, DN20	178375V