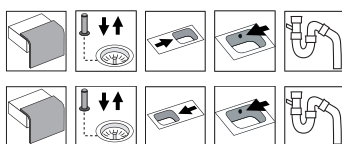


Frame FR97SH

Art. no. FR97SHRF
GTIN 7393069014075

Art. no. FR97SHLF
GTIN 7393069014099



Cabinet size	60
Overall dimension in mm	970 x 510
Bowl dim. in mm	340 x 380 x 160
Small bowl dim. in mm	155 x 380 x 120
Cut-out dimension, inset model	950 x 490
Waste hole dim. in mm	97
Waste hole placement	upper center
Material	EN 1.4301, AISI 304, SS2333
Material thickness in mm	0,9
Net weight in kg	8.00
Pcs per pallet	10
Design	Halvor Thorsen/ Martin Krafft

Description

Inset sink with universal flange, for inset, under- and flush mount, with 1½ bowls and drainer. The firm lines and the rounded corners give a modern and harmonious expression. Delivers with pop-up waste, overflow and drain grating in the large bowl, and manual basket waste in the small. Water trap, soap dispenser and rinsing basket in black plastic is included with the product.

Included Optional

